

# ***Running Lawgic with McAfee Firewall 4.02***

Document Number PDB2857

15-Dec-03

## *Indications*

If you are using McAfee's Firewall 4.02 or similar, and when you try to run Lawgic you see an empty screen that says *Lawgic* in the title bar, and *Starting Lawgic ... Please Wait* at the bottom, and after several minutes a *Dropped Connection!!!* message appears, this bulletin could apply to you.

## *Background*

Advanced programs, like Lawgic, exploit sophisticated capabilities within the operating system to accomplish their work. McAfee's Firewall ("MFW") requires the user to explicitly authorize a program to use these capabilities. This bulletin describes how to establish that authorization, for the Lawgic family of programs, within MFW.

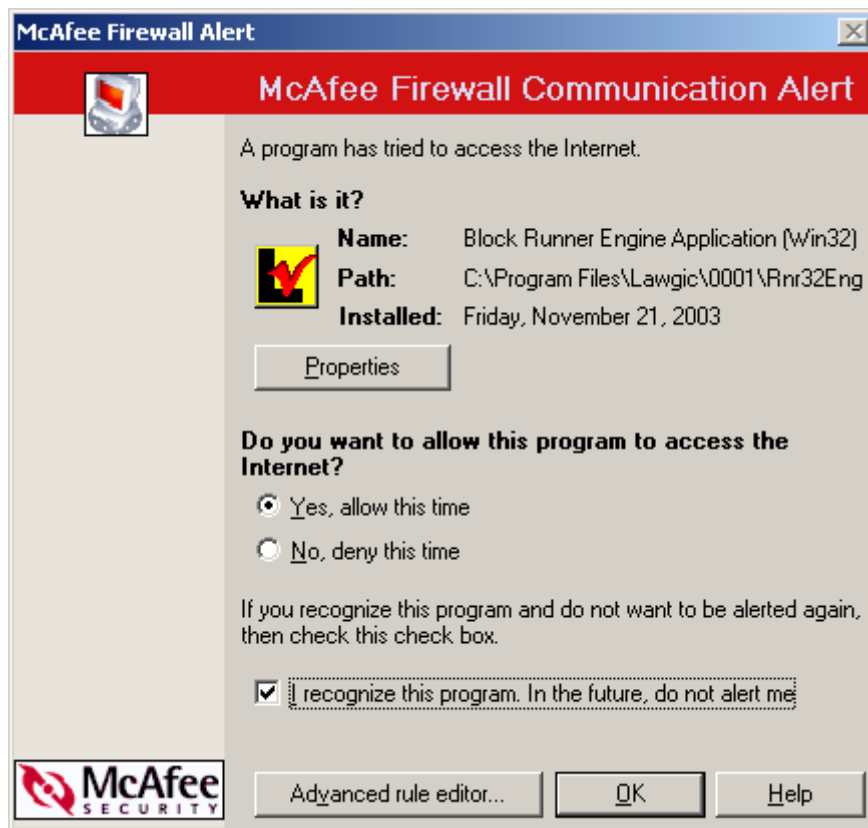
## *Procedure*

Setting up to run Lawgic with MFW is simple.

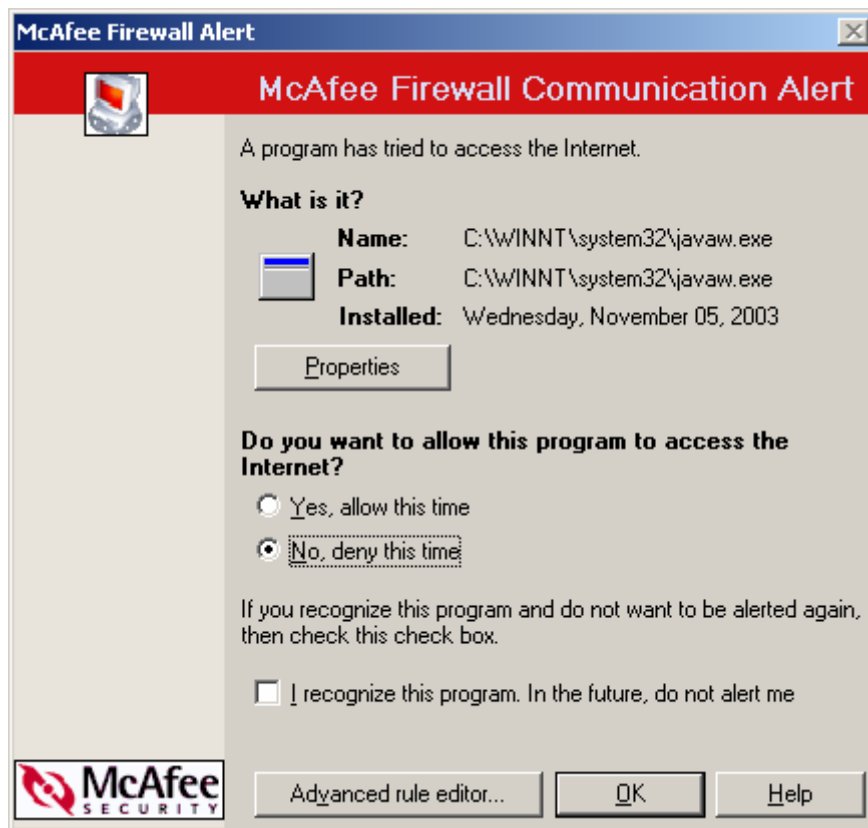
1. Make sure there is nothing running on your computer. It's best to do this procedure right after rebooting the system.
2. Install MFW (if not already).
3. Install Lawgic (if not already)
4. Run Lawgic. MFW will pop up the following alert:, requesting authorization for Lawgic's main program, *Rnr32Eng.exe*:



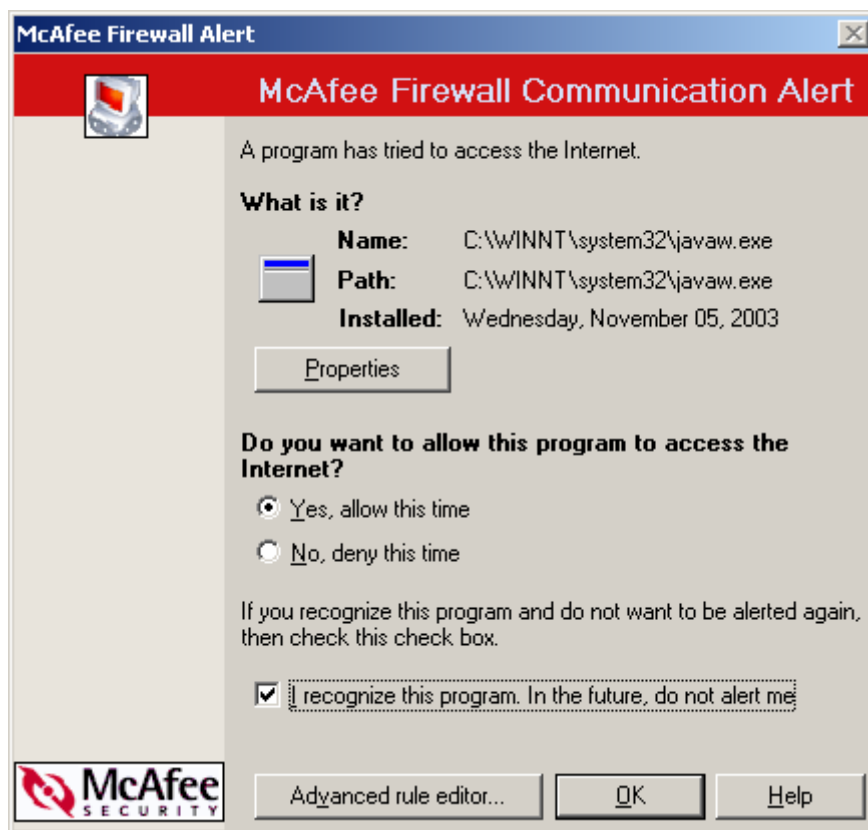
5. Select the *Yes, allow this time* button, and check the box labeled *I recognize this program. In the future, do not alert me.*



6. Click OK, and MFW will pop up a similar alert for the auxiliary program *javaw.exe*:



7. Again, select the *Yes, allow this time* button, and check the box labeled *I recognize this program. In the future, do not alert me.*



8. Click OK -- you're done.

### *Troubleshooting*

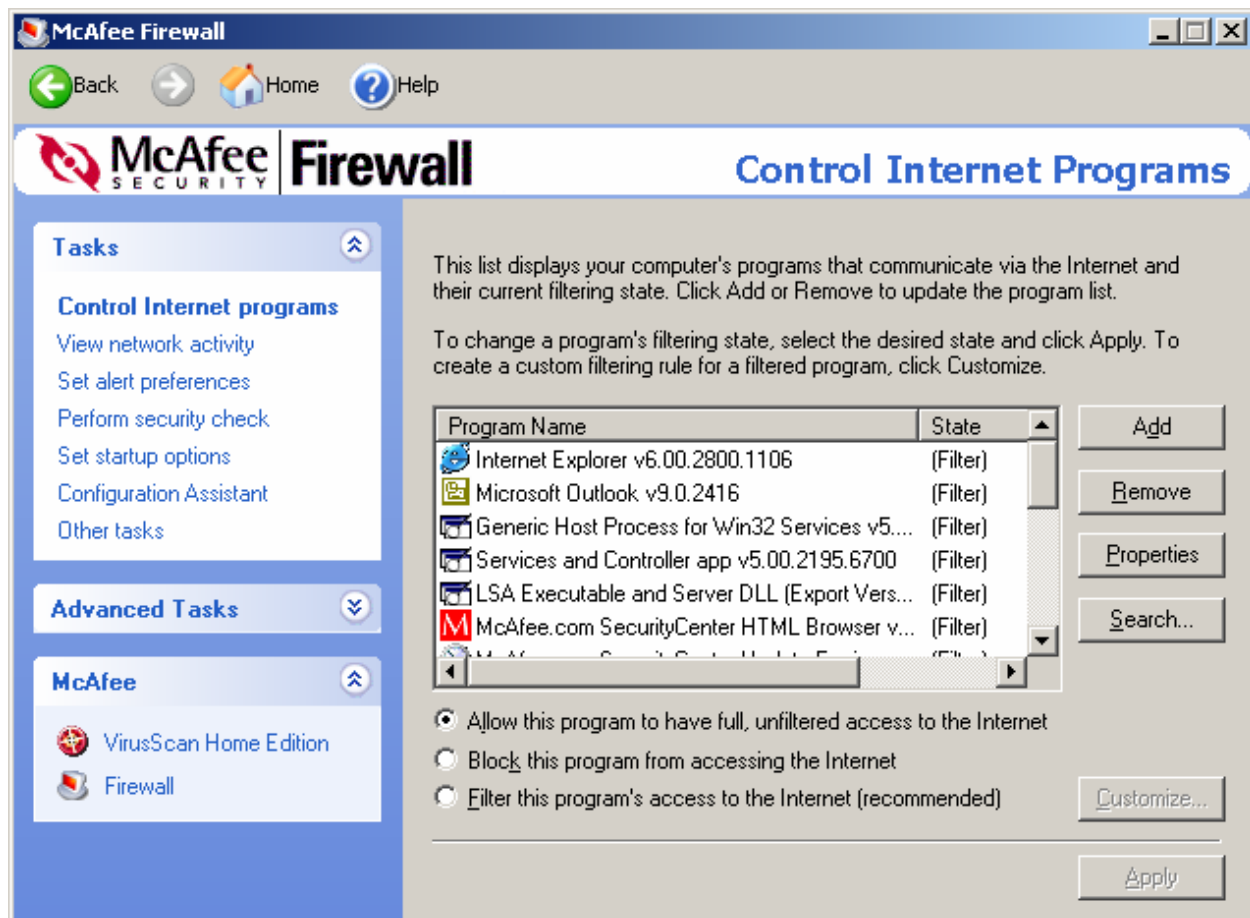
If the symptoms are unchanged, or if MFW did not present the alerts described above, do this:

1. Open the MFW Main Screen, typically located off the "Start" button at:

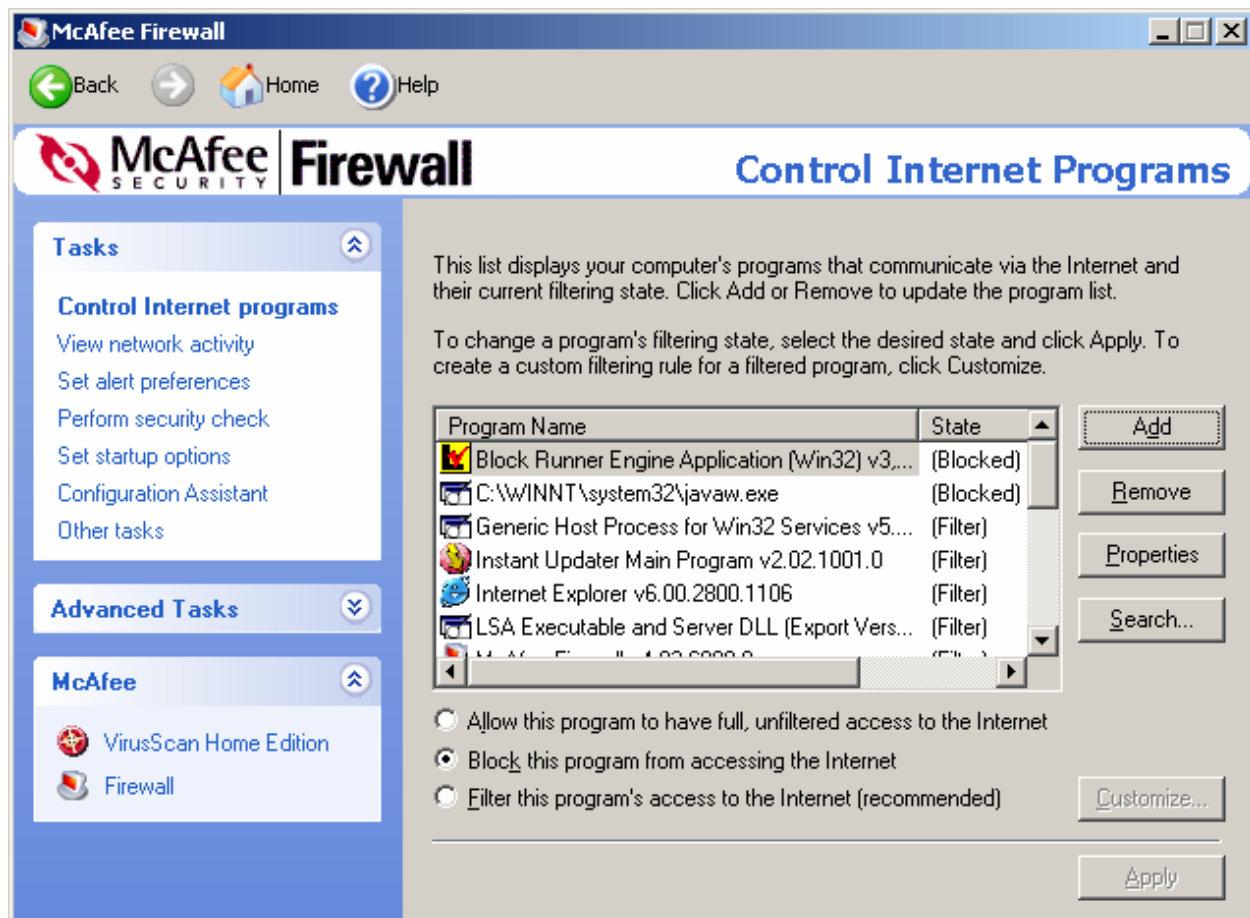
Start/Programs/McAfee/McAfee Firewall



2. In the left side column, click on *Control Internet Programs*.

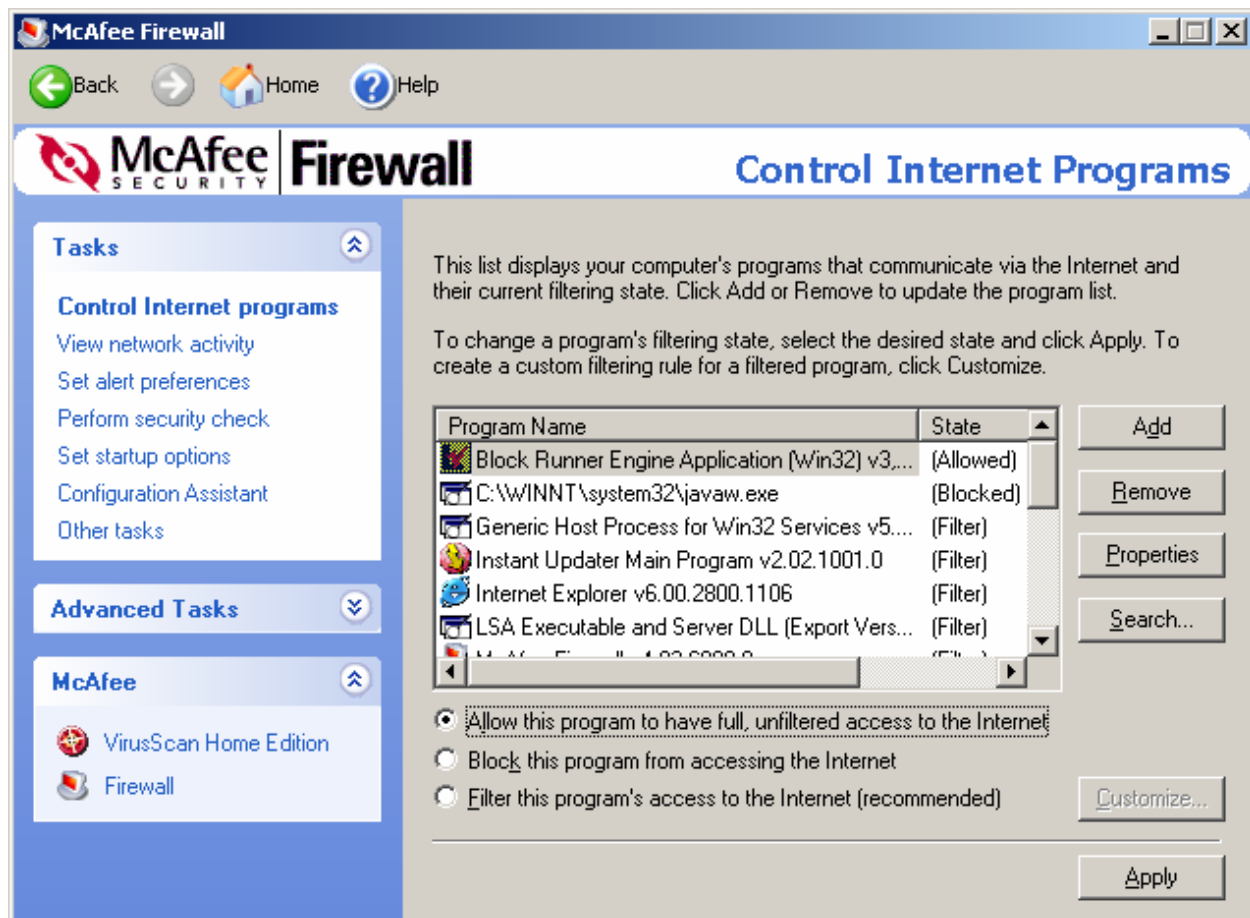


3. In the box in the center that lists the programs, click on the *Program Name* heading to sort the list alphabetically.

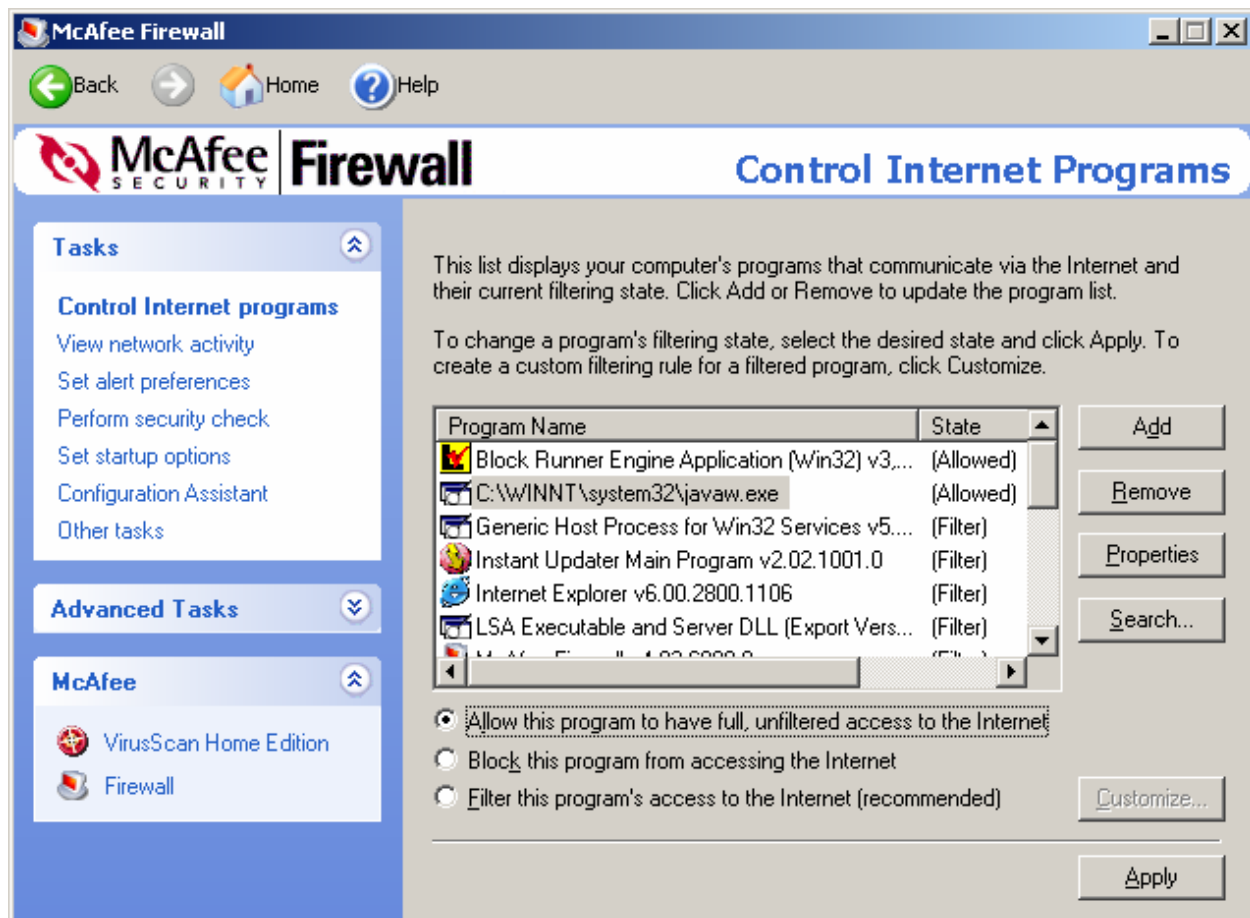


4. Locate *Block Runner Engine Application* on the list, click it to select it, and click the radio button below the list labeled *Allow this program to have full, unfiltered access to the internet*.





5. Similarly, locate *javaw.exe* on the list. This program will be listed under its full path, typically *C:\WINNT\system32\javaw.exe*. Click it to select it, then click the radio button below the list labeled *Allow this program to have full, unfiltered access to the internet*.



6. Click *Apply* in the bottom right, and close the MFW window.

6. You're done.

### *About Lawgic Technical Bulletins:*

Lawgic's technical bulletins are intended to help you in your use of Lawgic's products and in your practice.

If you have comments or questions about this bulletin, or suggestions for other areas that you believe ought to be covered by a bulletin, please tell us by sending email to [lawgic@support.com](mailto:lawgic@support.com).

